



*Delivering good quality ships to the
highest specification at a price that
fits today's cost focussed market*

TASIK TOBA

105m DP3 SUBSEA OPERATION VESSEL
vessel specification

TASIK TOBA

105m DP3 SUBSEA OPERATION VESSEL



Tasik Subsea is currently in process of building a 105m DP-3 Subsea Operation Vessel **“TASIK TOBA”**.

The vessel is capable but not limited to:

- ✓IRM / IRRM and SURF Installation
- ✓Light & Medium Construction
- ✓Deepwater Intervention
- ✓Saturation & Air Diving Support
- ✓ROV Support

The SOV **“TASIK TOBA”** has a 150 tonne knuckleboom subsea crane, Active Heave Compensated.

“TASIK TOBA” has a 22.20 m diameter helideck for fast transfer of crew and operating staff. The vessel can accommodate 120 personnel.

TASIK TOBA SPECIFICATION

General Particulars

Classification:	ABS ✕ A1 (E) Offshore Support Vessel, (DSV SAT, ROV, SPS ✕ ACC ✕ ENVIRO, GP ✕ DPS-3 BWT UWILD
Year/Built:	2017
Flag:	Marshall Islands
IMO/Call Sign:	TBA
GRT/NRT:	TBA
Deadweight:	Above 4,500 T
Deck Space:	1,000 m ²
Deck Strength:	10 T/m ²

Dimensions

Length Overall:	105.00 m
Length BP:	96.60 m
Beam Mid:	24.00m
Depth Mid:	9.00 m
Draft Designed:	6.50 m

Performance

Service Speed:	12 knots (abt.)
-----------------------	-----------------

Propulsion

Main Diesel:	4 x 2,500 kW
Generators	1 x 1m199 kW
Main Propulsion:	2 x 2,500 kW Voith Schneider
Bow Thrusters:	1 x Bow retractable azimuth (1,999 kW) 2 x CPP Tunnel thrusters
Emergency:	2
Generators	

Tank Capacities

Ballast Water:	4,000 m ³
Fuel Oil:	2,000 m ³
Potable Water:	900 m ³
Dry Bulk:	2300 m ³

Dynamic Positioning Systems

DP System:	Kongsberg K-Pos DP-22+ DP-12 BU
DP Class:	IMO DP Equipment Class 3 (DPS-3).
Reference Systems:	2 x DGPS 2 x HIPAPs 2 x Light weight taut wire
Sensors:	3 x Gyro compass 3 x MRU 3 x Wind Sensor

Deck Machinery / Cranes

Main Offshore:	Macgregor Electro Hydraulic
Crane	Knuckle Boom type with Active Heave Compensation (API 2C). <u>Lifting Capacity</u> Main Line 150 T @ 11.5 m, Hook travel dist. 3000 m Whipline 25 T @ 35 m 1.5 T man riding function

Auxiliary Deck:	<u>Lifting Capacity (SWL)</u>
Working Cranes	2 x 10 T @ 10 m <u>Subsea Working Capability</u> Hook travel dist. 3000 m

Fwd Cargo /:	<u>Lifting Capacity (SWL)</u>
Stores Crane	2 x 10 T @ 10 m <u>Working Radius</u> 4.7 m (Min) / 18.5 m (Max)

ROV Support

1. Space and facilities are available to support Clients' choice of ROV and ROV LARS
2. Dedicated ROV Hangar (doors—Port & Stbd)
3. Control room
4. ROV Tech space workshop
5. Redundant power supplies available

[Home](#)[Intro](#)[Specs 1](#)
[Specs 2](#)[GA](#)[DP System](#)[Crane](#)[Diving System](#)[Propulsion](#)[Contact](#)

TASIK TOBA SPECIFICATION

Inbuilt Saturation Diving System

Design / Class:	ABS Class / IMCA compliant
Capacity:	15 man
Depth Rating:	300 m
Bell:	1 x 3 man insulated & positively buoyant
Bell LARS:	PH Hydraulic
Bell Moonpool:	3.6 m x 3.6 m
Chambers:	3 x 6 man DDCs Interconnecting via 3 x TUP & 1 x Wet Pot
Gas Storage:	19,712 m ³ (2.2 m ³ per tube, 200 bar, 44 tubes)
Potable Gas Quad: Storage	10 x 16 Cylinder gas quads
Diver Gas Reclaim: System	Divex Electric Gasmiser Type
Chamber Gas: Reclaim System	Divex Gaspure Type
Nitrogen Removing: System	Divex Helipure Type
SPHL	2 x 15 man SPHL

Working Moonpool

1 x 7.2 m x 7.0 m with moonpool aeration

Air Diving System

2 x Air Dive Stations + DDC
Dedicated LARS and dive control

Helideck

Suitable for Sikorsky S92/S61N
D value: 22.20 m

Accommodation

Twin Cabins:	42
Single Cabins:	25
Suites w/day room &: bed room	11
Total:	120 men
Hospital:	1 (2 beds, 1 treatment room)
All cabins are fully air conditioned & c/w attached washroom	

Other Facilities

Office:	4
Conference Room:	2
Prayer Room:	1
Gymnasium:	1
Smoking Room:	1
Recreation Room:	2
Laundry Room:	2

Stabilisation

Roll reduction stabilization tanks
Automatic Anti Heeling System
Voith Thruster roll compensation mode

[Home](#)[Intro](#)[Specs 1](#)
[Specs 2](#)[GA](#)[DP System](#)[Cranage](#)[Diving System](#)[Propulsion](#)[Contact](#)

TASIK TOBA *GENERAL ARRANGEMENT*

150T SWL AP2C1 Subsea Crane

- 3,000 Metre working depth
- Active Heave Compensation
- 25T SWL Whipline

Voith Schneider Propulsion x 2

- Active Roll Compensation Mode

Air Diving System

- 50 Metre, 2 x Stage
- 2 x Air DDC

Working Moonpool

- 7.2m x 7.0m
- Load Bearing Top Door

1,000 m² Working Deck

- 50 Metre, 2 x Stage
- 2 x Air DDC

120 Man Lifeboats each side

- Australian Standard
- SOLAS Standard

2 x Tunnel Thrusters

1 x Retractable Azimuth Thrusters

ROV Capability

- ROV Hangar
- ROV Control Room
- ROV Workshop / Store

Saturation Diving System

- 300 Metre, Single Bell
- 15 Man (3 x 6 Man DDCs)
- SPHL (Port & Starboard)

Helideck

- D22.2 Metre
- Sikorsky S91 / S61N
- Deck Integrated FiFi System



[More Information](#)



[Home](#)

[Intro](#)

[Specs 1](#)
[Specs 2](#)

[GA](#)

[DP System](#)

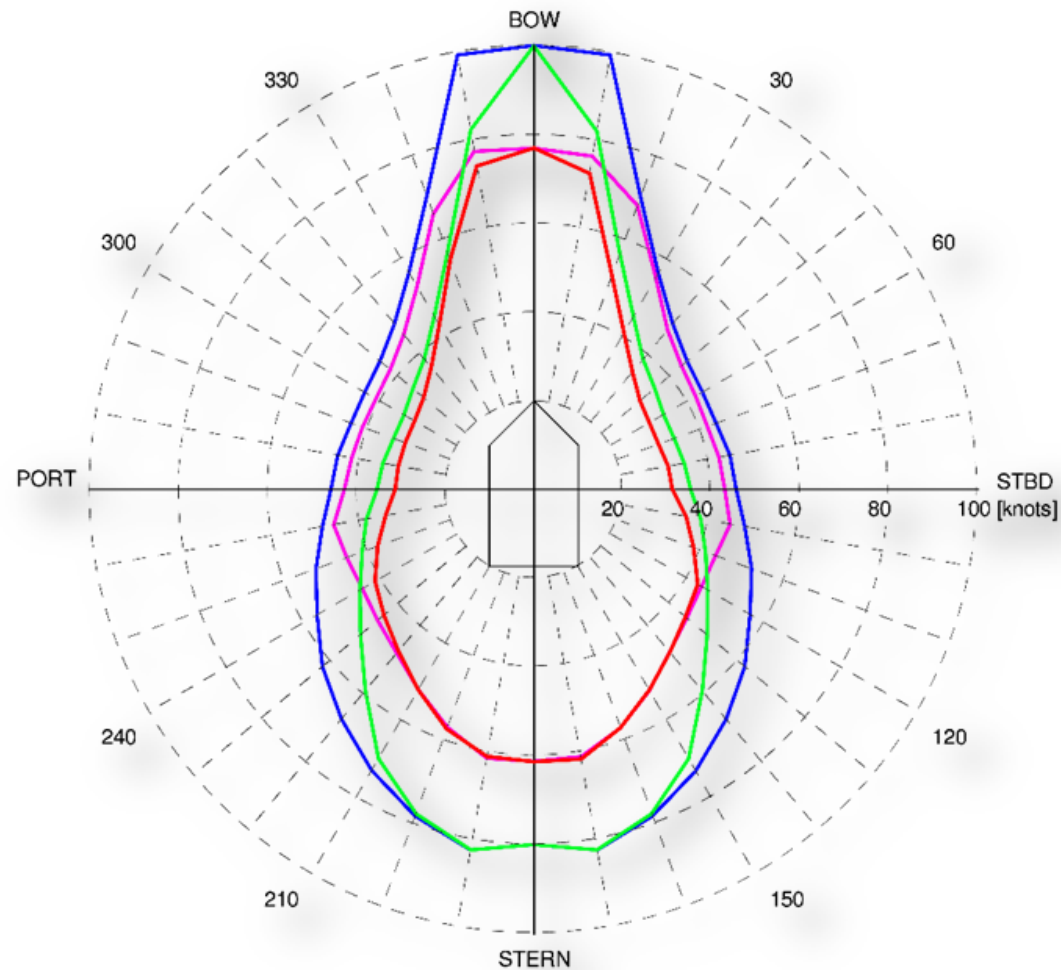
[Craneage](#)

[Diving System](#)

[Propulsion](#)

[Contact](#)

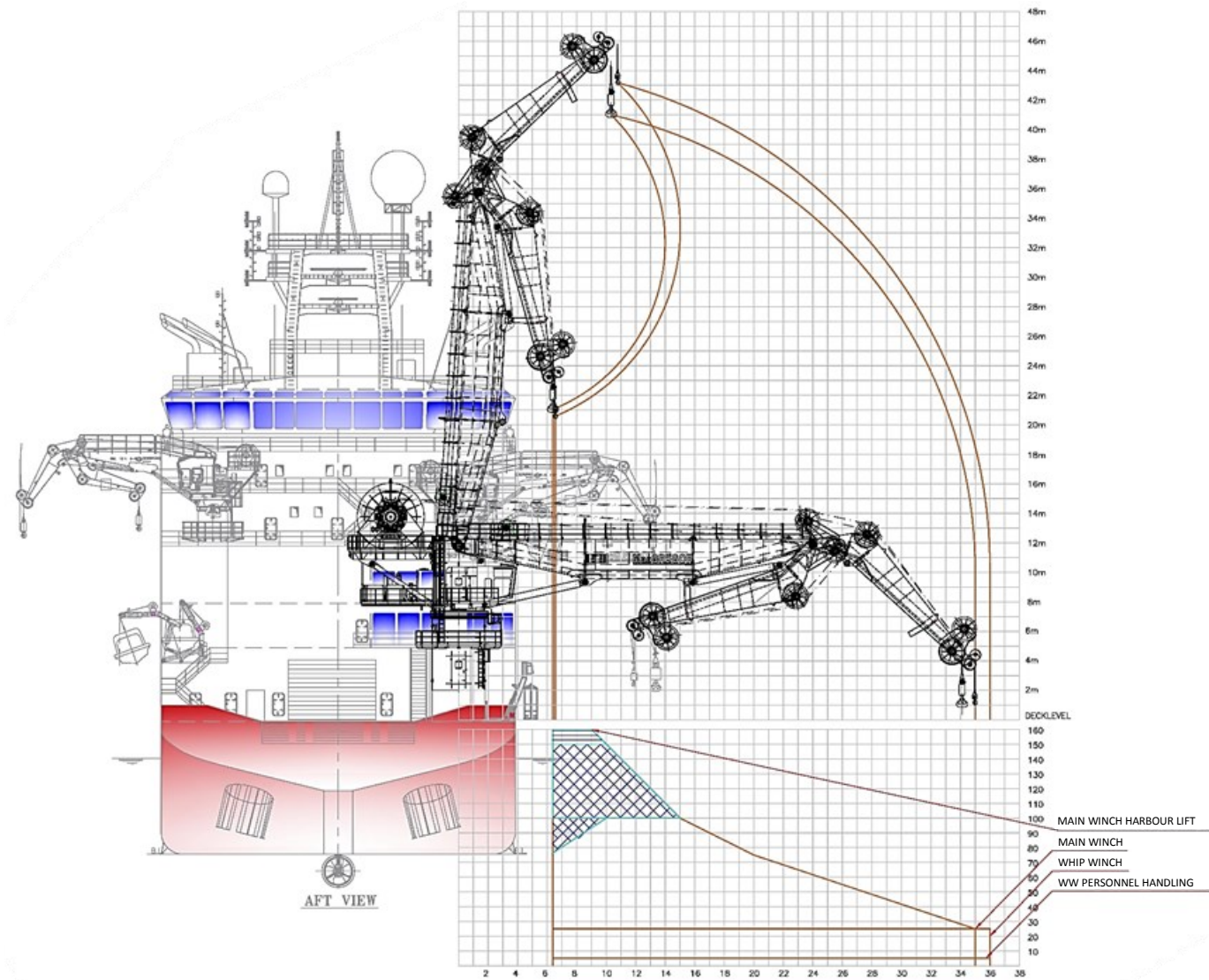
TASIK TOBA *DYNAMIC POSITIONING SYSTEM*



- ALL THRUSTERS ON LINE
- LOSS OF VSP1
- LOSS OF T1
- LOSS OF PORT ENGINE ROOM / BUS A

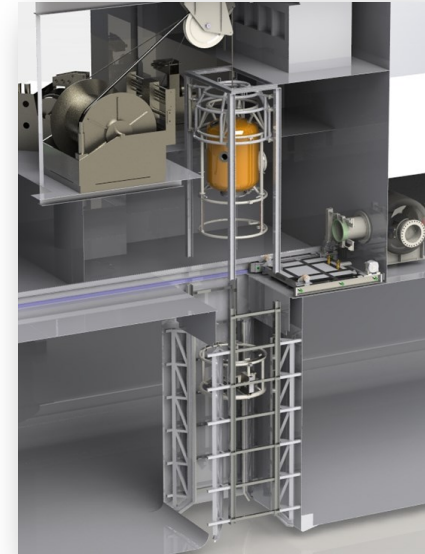
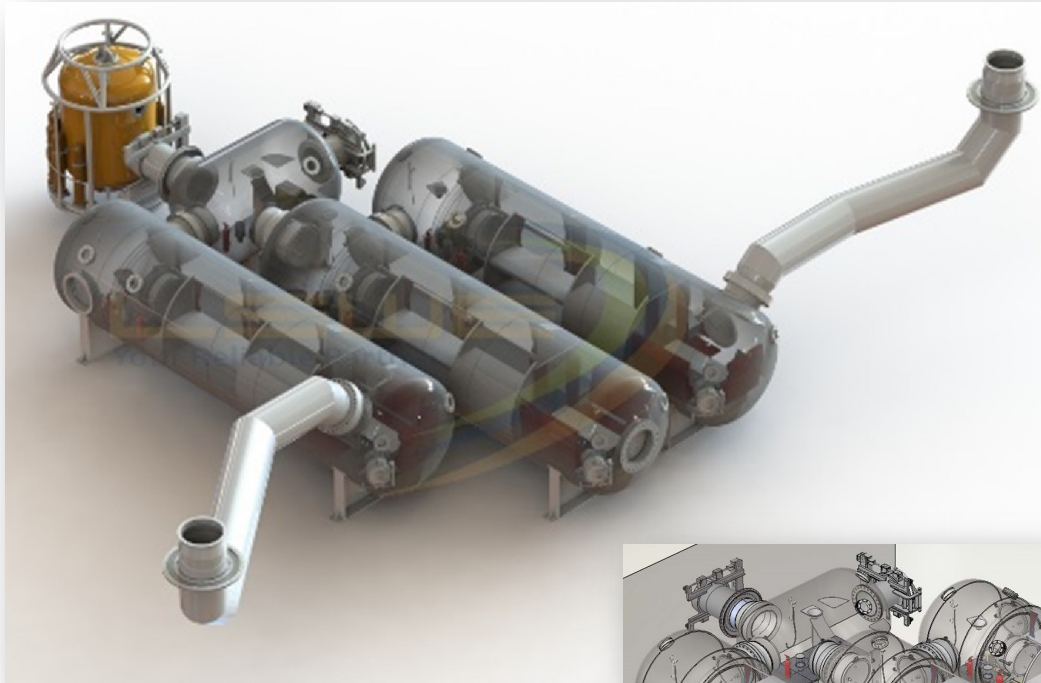
[More Information](#)

TASIK TOBA CRANAGE CAPACITIES

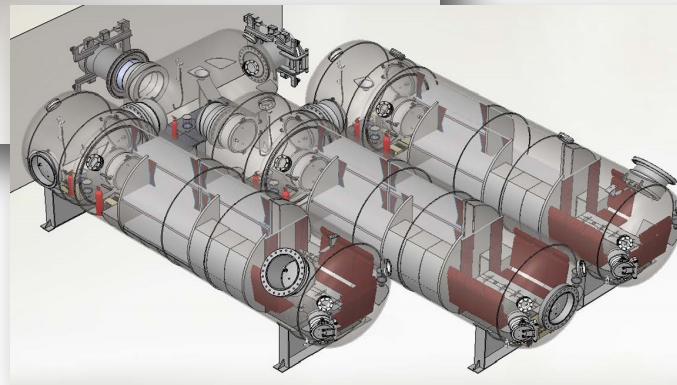


[More Information](#)

TASIK TOBA *DIVING SYSTEM*



Bell Handling System



Detailed Chamber Layouts



Medical Monitoring and Wi-Fi
Communications for Divers in DDCs

[More Information](#)

TASIK TOBA *PROPULSION—Voith Schneider Thrusters*



Voith Schneider Thrusters

Fast Response Time

Improved Position Keeping

Active Roll Compensation

Very Low Maintenance Cost

Voith Engineering Support



[More Information](#)

TASIK TOBA *105m DP3 SUBSEA OPERATION VESSEL*



Please visit www.tasiksubsea.com for more information about Tasik Subsea and Tasik Toba.



Tasik Subsea Pte Ltd

Singapore Office: 1 Commonwealth Lane, #09-19 ONE Commonwealth, Singapore 149544

Tel: +65 6327 4606

Email: chizhong.s@tasiksubsea.com

Tasik Subsea Pte Ltd, Tasik Toba Shipbuild Project Office c/o Fujian Mawei Shipyard

China Office: 3 Chuan Zheng Road, Fuzhou 350015, Fujian Province, China