

HD Diver Camera Completely Changing Diver Video Systems

**COMMERCIAL DIVE SYSTEM PRODUCTS**

Key Features and Benefits:

- Make the change from old composite video equipment to High Definition.
- Resolution 1920x1080 with low light colour performance (0.15 lux).
- Transmits signals over one standard twisted pair in the umbilical up to 600m+
- Integral 9W dimmable LED main light
- Emergency battery operated LED light
- Integral Depth Sensor
- Integral Heading and Attitude Sensor
- Connect Bailout Bottle Pressure Sensor
- Wet-connect second hand-held camera with light to the same umbilical



Product Overview

Fathom Systems HD Diver Video Camera brilliantly solves the problem of sending digital HD video, interference free, over long umbilicals without using fibre or special cable types.

Needing only two umbilical wires for power and data, fNETp delivers live video pictures with the diver's voice comms over standard Ethernet networks. Video can then be recorded anywhere on the network but is also continuously recorded locally in the camera.

In addition to the revolutionary HD camera, a high intensity dimmable LED light is integrated in the camera along with an independent battery powered automatic emergency LED light should main power to the camera be lost. Sensors measure diver's depth and heading and, by adding a Fathom bailout bottle pressure sensor, the supervisor can continuously monitor the contents of the diver's emergency breathing gas cylinder.

Integrated Lighting, Sensors and Safety Features:

In addition to the outstanding low-light performance HD camera, several unique features have been incorporated to provide significant operational advantages and key safety benefits.

Distribute and Record:

Ethernet IP streaming and recoding of live images and data is possible to any location including between an LDC and mother vessel over marine WiFi links or even to company and client offices ashore.

Integrated Sensors:

In addition to the revolutionary HD camera, there are sensors to measure the diver's depth and his heading which is transmitted to the surface over the same 2-wire link.

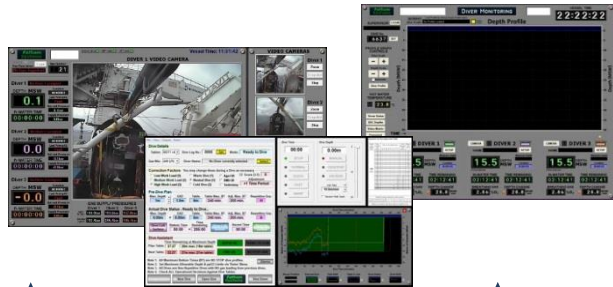
Illumination:

A high intensity dimmable LED light is integrated in the camera.

An independent battery - powered emergency LED light turns on automatically if main power to the camera is lost.

Emergency Breathing Gas Monitoring:

By adding a Fathom bailout bottle pressure sensor, the supervisor can continuously monitor the contents of the diver's emergency breathing gas cylinder.



Run keyed applications anywhere: -

- Control, View & Record.
- Diver Monitoring System.
- Dive Management & Tables.



Topside Camera Control Unit (CCU):

The CCU provides an fNETp interface to one diver over 600m+ single twisted pair for up to one Hat Camera and one Handheld Camera.

Each CCU also includes the capability to connect several topside signals for Fathom DMS expansion including;

- 3 x Gas Pressure Sensor inputs for Primary, Backup and Diver's last point of influence
- Pnemo Depth (pressure) Sensor
- Diver Breathing Gas O2 and CO2 Analysers

Close Inspection:

Whenever a closer or alternative view of a job is required, Wet-connect a second hand-held camera and light, sharing the same fNETp umbilical.

Mounting:

Purpose-designed brackets are available that match the camera perfectly to a range of diving helmets and masks.

fNETp:

600m+

Power and data with only two conductors

Optional Bailout Pressure Sensor

